

WHITLEY W.I. News



FUTURE WI MEETINGS

Thursday 6th April - Our Speaker Peter Sykes is telling tales of his career as a consultant surgeon. The competition is for an unusual bottle.

Thursday 20th April - Village Group Spring Lunch at Antrobus Village Hall - tickets £10 - still available .

Wednesday 3rd May - our annual outing to this year is to Chester taking in a 2hr boat trip with optional lunch on board plus time for shopping/ sightseeing . £25 without lunch £32 with lunch. More details at April's meeting. Guests are welcome for an additional £5 as we are subsidising this trip for members.

Thursday 4th May - Our speaker from The Cheshire Wildlife Trust will talk about their work . The competition will be for a wildlife figure/ornament.

From your President

It is with great sadness that I have to relate the news that our fellow member Dorothy Thompson passed away on 16th March. Dorothy had been a member of Whitley WI for many years and a stalwart committee member, most recently acting as our WI friend who contacted members who were poorly or facing difficult times. You will all remember her friendly face on the Welcome desk selling raffle tickets and also her wonderful flower arrangements she regularly donated to our raffle.



The photos show Dorothy manning the WI craft stall at the Whitley Rose Queen a few years ago and also Dorothy leading the celebrations for Queen Elizabeth's 90th birthday.



Dorothy never lost her enthusiasm for WI and joined many of the sub-groups enjoying craft and baking as well as coming up with ideas for our annual outings and fundraising events.

As a fellow committee member commented when hearing the sad news, Dorothy gave so much and asked for nothing in return. She will be sadly missed.

Our condolences have been sent to Dorothy's family.

Melanie Barber

Diary Dates

April

Monday 3rd April Book Club
10am - 12pm WVH *The Perfect Guests* by Emma Rous

Thursday 6th April- main meeting 7.30pm WVH
Peter Sykes - DIY surgery

Tuesday 11th April- Walking Group - Meet at WVH at 10am.

Wednesday 12th April
-Scrabble 7.30pm - 9pm WVH

NO CRAFT GROUP THIS MONTH

Thursday 20th April - Village Group Spring Lunch Antrobus Village Hall 12-2pm

Monday 24th April - Community Coffee morning 10.30am -12pm WVH

Monday 24th April - Art Group 1.30 - 3pm at WVH with a theme of 'Animals' led by Ann Cookson

Friday 28th April - Baking Beauties 1.30-3pm WVH.

May

Wednesday 3rd May -Annual outing to Chester

Thursday 4th May - main meeting 7.30pm WVH - The Work of the Cheshire Wildlife Trust

June

Thursday 1st June - main meeting -A Flower Festival with Strawberry Tea with Melanie Farrow

Saturday 10th June - Whitley Rose Queen WVH 1.30- 5pm

Tuesday 20th and Wednesday 21st June - Cheshire Show Tabley Showground

March's meeting was a real celebration of all things Welsh with Jean Waite coordinating our travels through the Principality. We were reminded of many places we have visited as a WI and also introduced to some gems Jean would recommend us finding time to see.

Joan Blackshaw gave us an interesting insight into the life of Llewellyn the Great, the last true Prince of Wales and Chris Jones talked us through the meaning of the various carvings found on the traditional Welsh love spoons.

Annette Minor gave everyone a Welsh welcome, *Croeso*, in national dress With refreshments including Bara Brith and Welsh cakes and a wonderful display of daffodils, not to mention the impromptu Welsh lesson, it really was a most enjoyable evening!



Diolch (thanks) Jean



The Walking group and Gardening Group met at Walton Gardens to enjoy a beautiful spring morning strolling around the grounds of Walton Hall before retiring for refreshments at the Heritage Cafe.

Our Federation Chairman Selina Prescott joined Village WI Group members at our fun filled evening with comedian Jamie Sutherland.



We all enjoyed a good laugh and left the hall with smiles on our faces!

GROUP LUNCH THURSDAY 20th APRIL 12-2pm Antrobus Village Hall



THERE ARE A FEW TICKETS STILL AVAILABLE

ASK AT APRIL'S MEETING

Usual 'Bag a Bargain' stalls Tickets £10

Craft Group Wednesday 15th March

Découpage, although an old craft is new to a lot of us so it wasn't surprising that we had 14 members arrive. We were all given a 'kit' which Pat had put together with contained two sheets of push out shapes which matched the design and then we had to arrange on top of the base picture with little sticky pads to make the picture have depth. A little fiddly to get going but by the end of the afternoon we had got the idea and all went home with a finished card and another design to finish at our leisure.



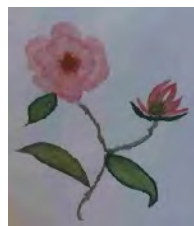
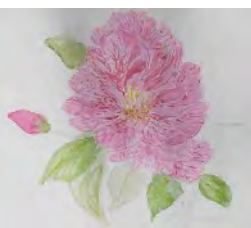
A big thank you to Pat who gave us such a super afternoon.



The **Weaver Valley WI Group Choir** is giving a Spring Concert in St Helen's Church Witton, Northwich on 22nd April at 7.00pm. Tickets £8, including refreshments can be ordered from choir member Alison Warner and paid for and collected on the door. All welcome - bring your friends! Contact Alison on 07914 937654 or email aliki51@btinternet.com

Art Group Monday 20th March – Camellias

Chris Spittle had a beautiful vase of camellias from her garden as a centre-piece for our meeting. She had followed a tutorial by Harriet de Winton, and made notes from this for us to follow, with a picture of her own painting. She gave us a few tips on how the picture was built and then left us to have a go.



Jigsaw Competition

Congratulations to our team of jigsaw enthusiasts, Jean, Susan, Annette and Ann who saw off competition from 8 other teams at CFWI headquarters to complete a 500 piece in 90 minutes. Not only did the Whitley ladies complete their jigsaw with 19 minutes to spare, but no other team managed to finish theirs!



Well done!

